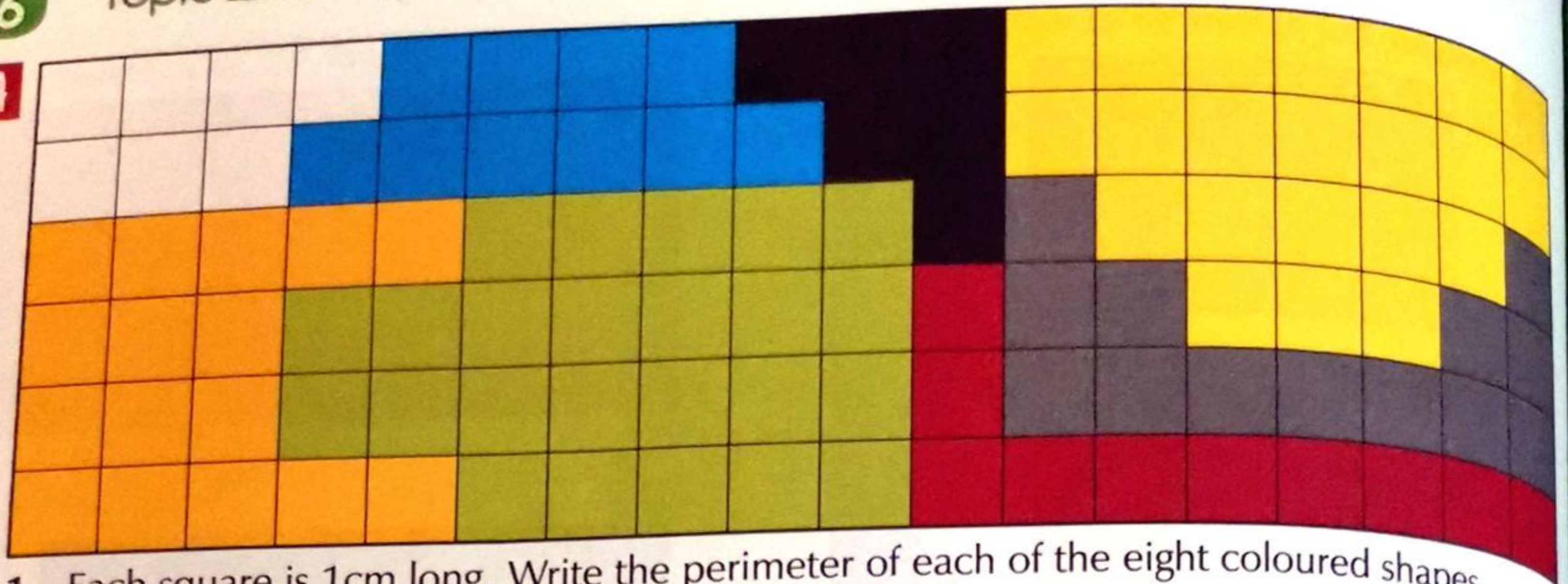
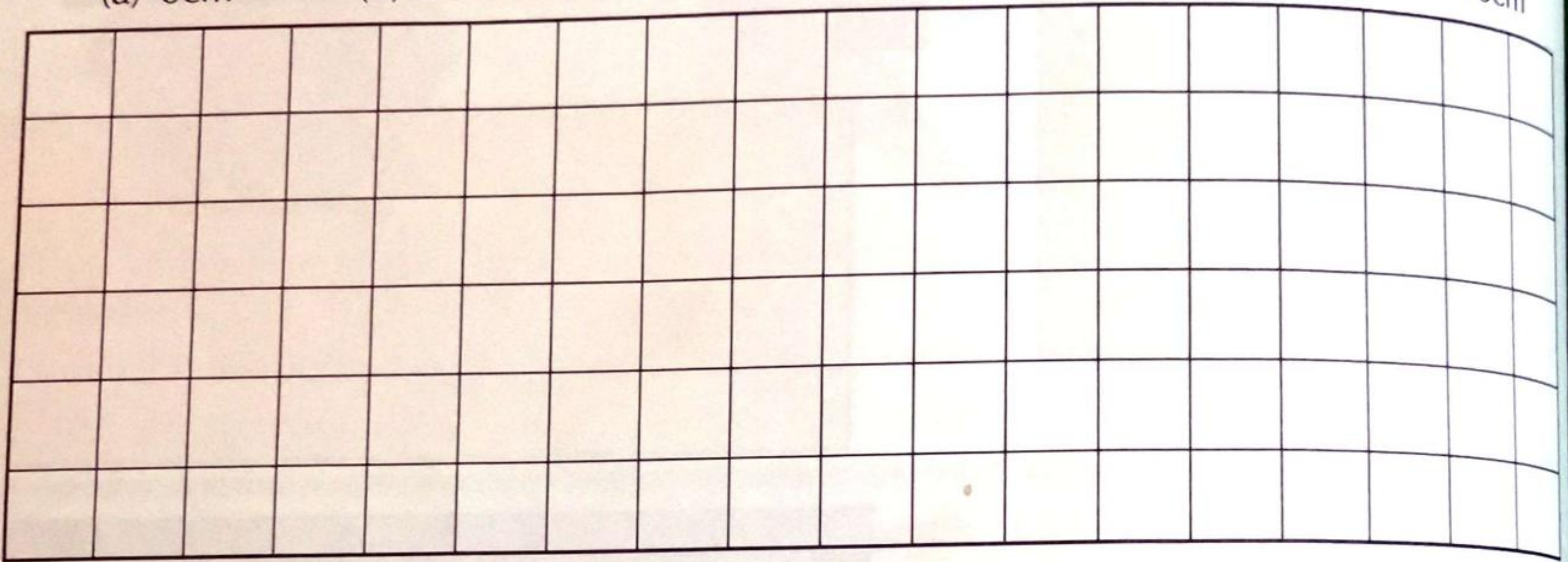


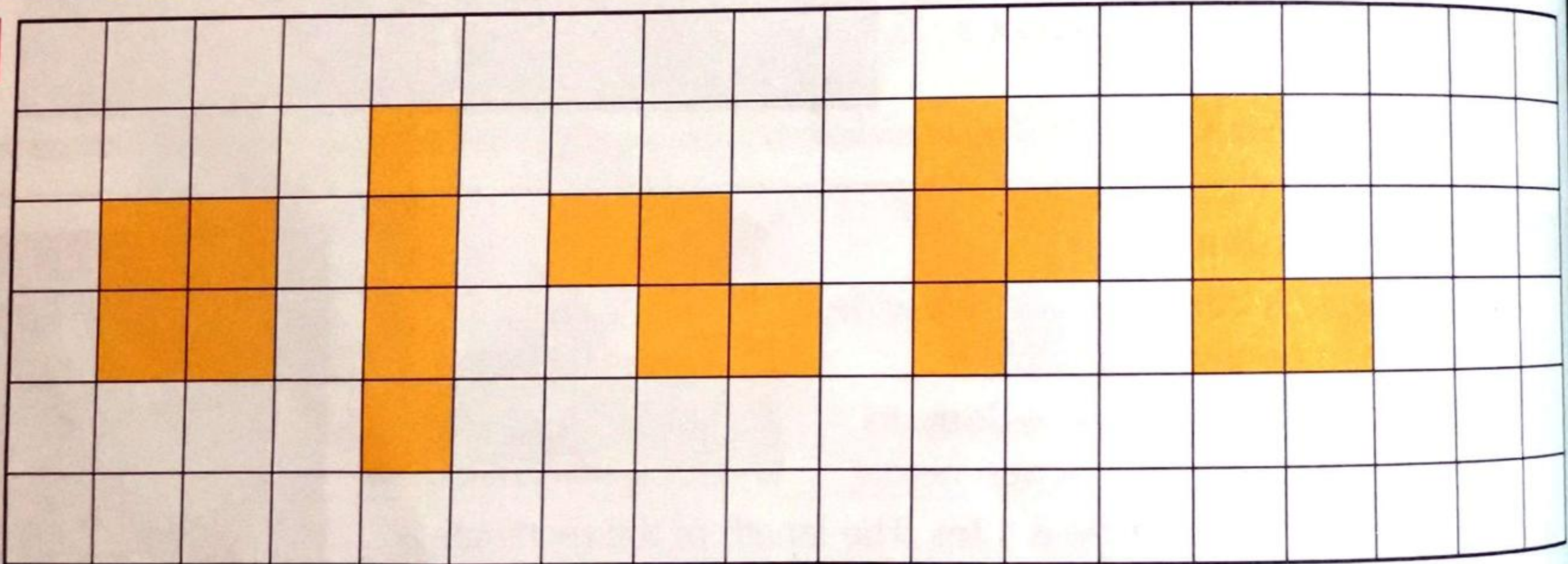
A



- Each square is 1cm long. Write the perimeter of each of the eight coloured shapes.
- In the grid below, draw a shape with a perimeter of the following lengths:
 (a) 6cm (b) 8cm (c) 10cm (d) 12cm (e) 14cm (f) 16cm



B



- Each shape above is made of four touching squares. What is the perimeter of each shape?
- Which shape has the smallest perimeter?
- You will need some squared paper. What shape made from five touching squares has:
 (a) the greatest possible perimeter? (b) the smallest possible perimeter?

Objectives • 456 Understand, estimate and measure the perimeter of regular 2D shapes.

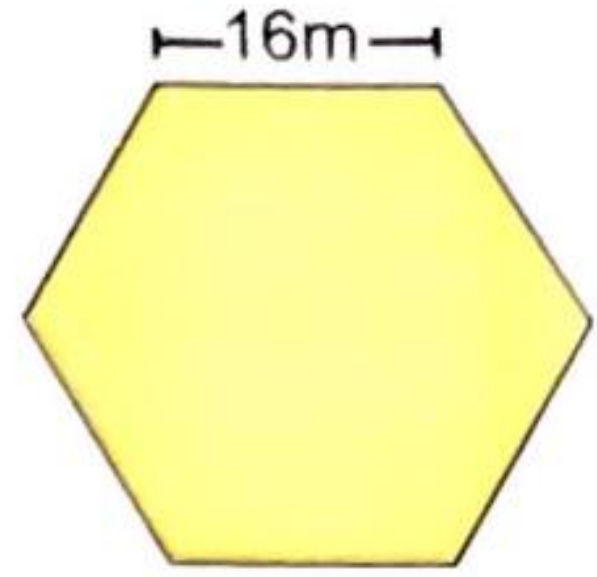
Strand Measures
Strand Unit Length



A Explain it! What is a perimeter?

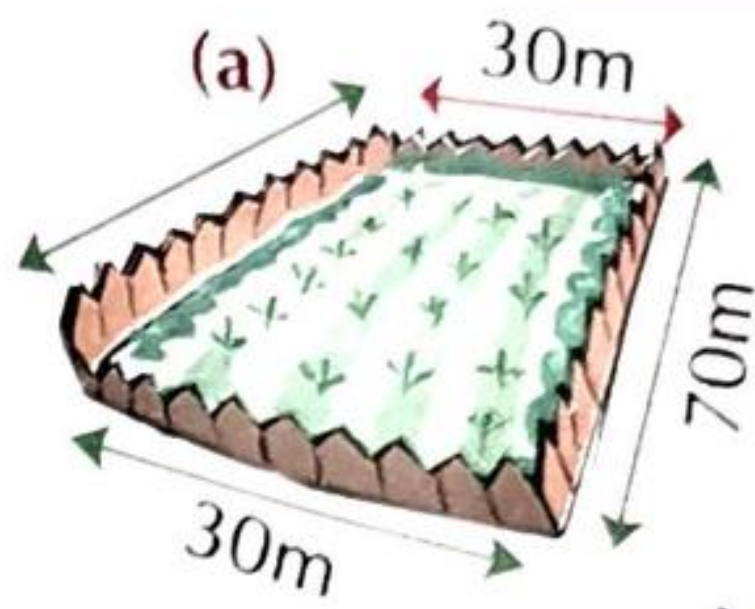
B Do it!

1. What is the perimeter of a square if each side measures **15m**?
2. What is the perimeter of a rectangle that is **12m** long and **8m** wide?
3. A triangle has a perimeter of **45m**. Two of the sides measure **18m** and **14m**. How long is the third side?
4. What is the perimeter of a hexagon if each side measures **16m**?

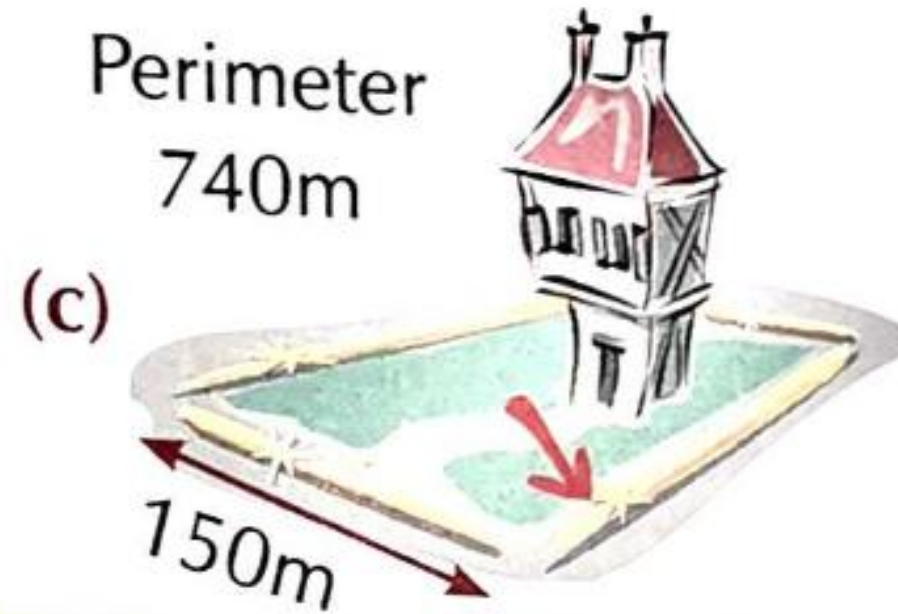


C solve it!

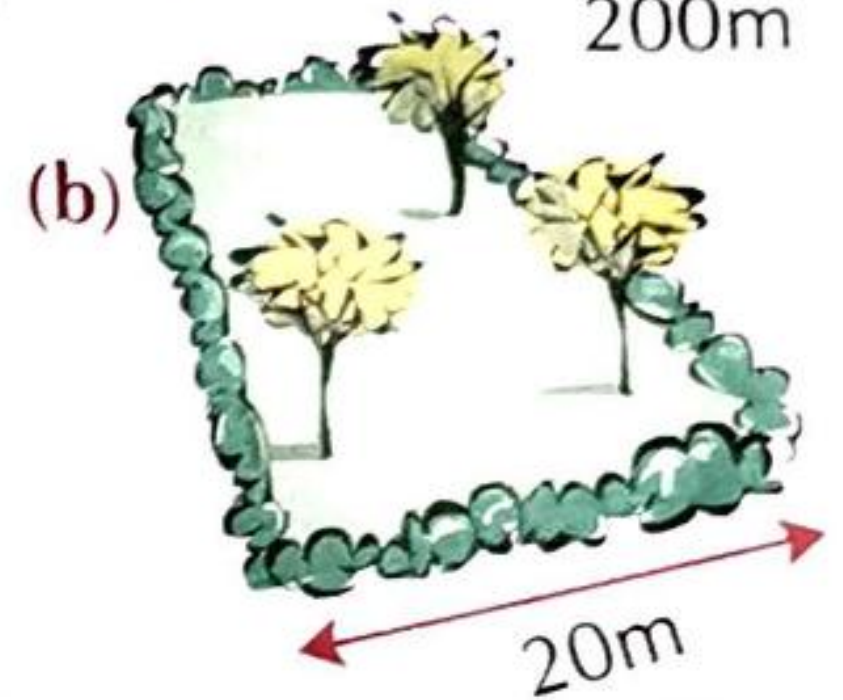
1. If you walked twice around a square whose sides each measure **50m**, how far would you walk?
2. A rectangular field (picture a) has a fence measuring **200m**. What is the length of the fence on the far side?
3. The field in picture (b) also has a perimeter of **200m**. How long is the field?
4. A house (picture c) is protected by a beam in the shape of a rectangle. What is the length of the beam to which the large red arrow points?



Perimeter
200m



Perimeter
740m

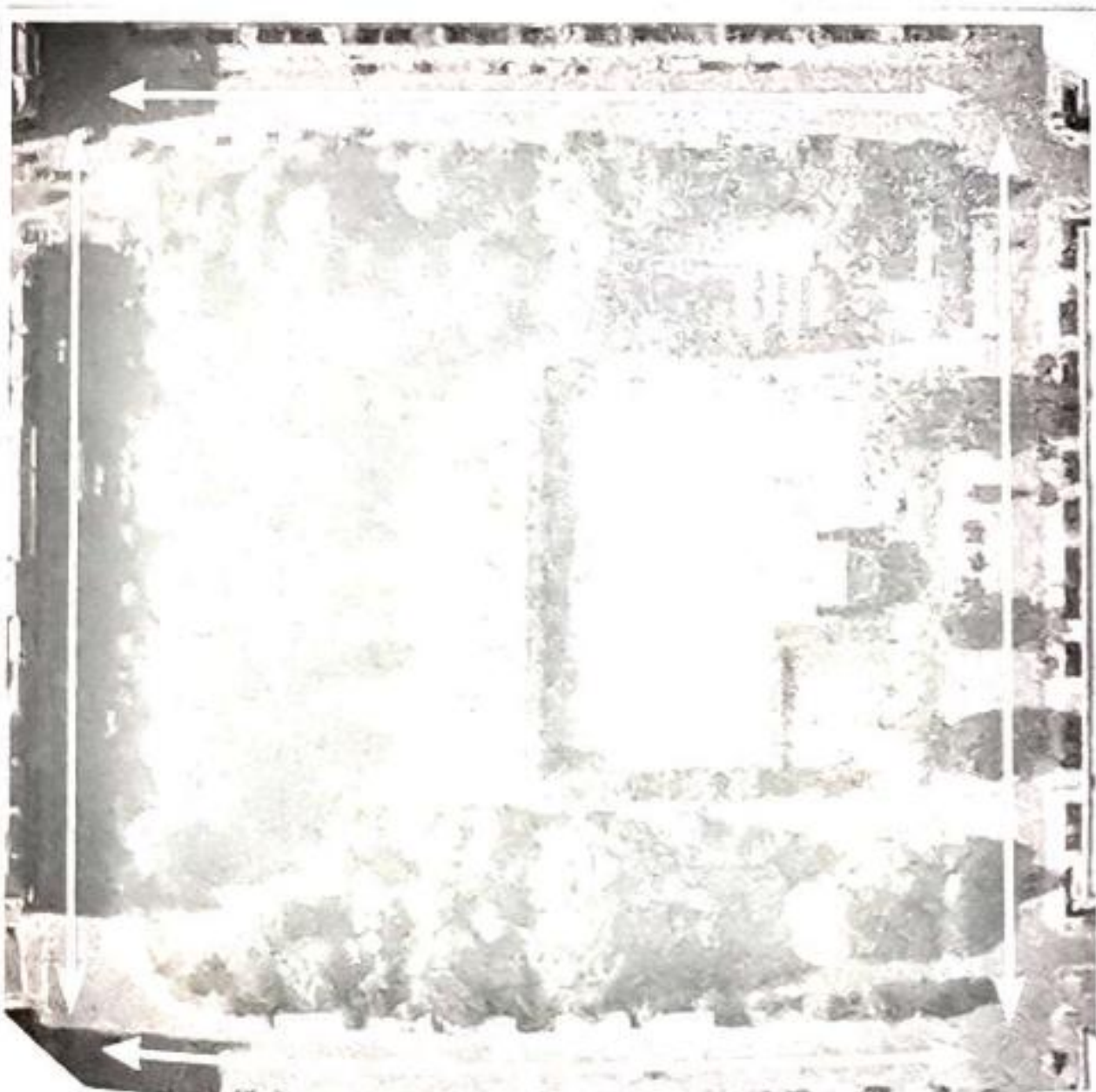


D say it!

A large building in a city caught fire and firemen put barriers around the perimeter of the building. Why do you think they did this?

E share it!

1. Scientists measured the perimeter of this square shape in outer space and found that it was **480m**. What was the length of each side?



2. A car drove around Mountjoy Square, covering a distance of **640m**. What is the length of each side of the Square?

